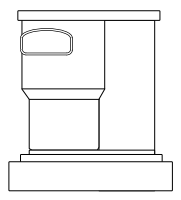
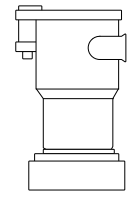


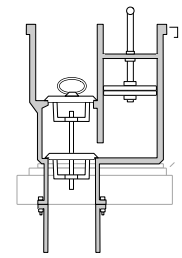
top



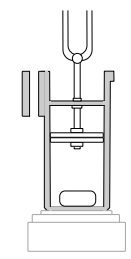
side



rear



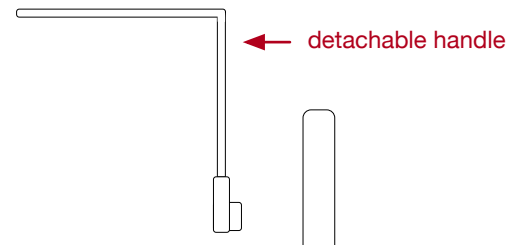
cross section from side



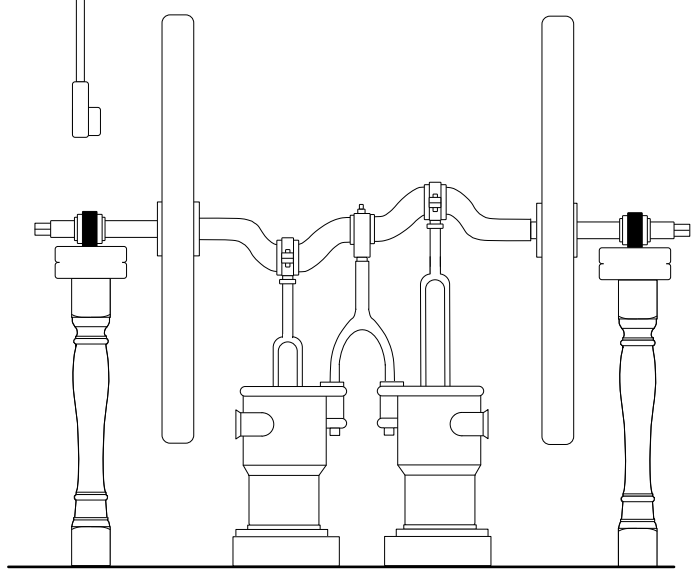
cross section from front

pump cylinder

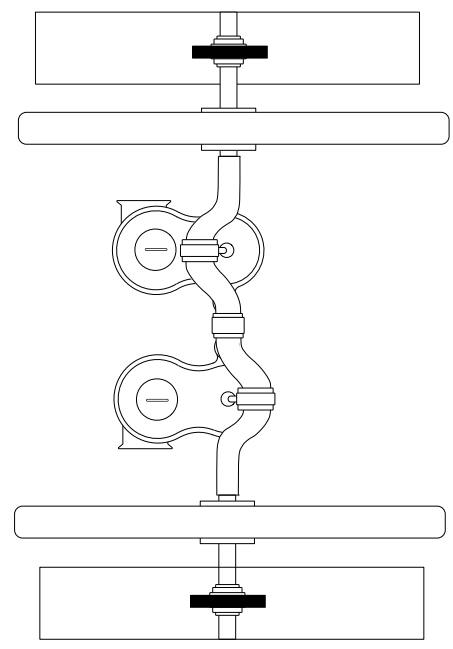
This Pump is based on Paasch plate 68 & the pump on the Cutty Sark. I took some of the internal details from the National Park Service plan for the pump on the *Balclutha*. The most popular type of pump in 1851 was a double acting one of the type shown in the somewhat conceptual cross section. The pump was bolted to a pipe extending into the bilge. The upward stroke of the piston pulled water into the pump chamber and the downward stroke expelled the water out the spout in the side.



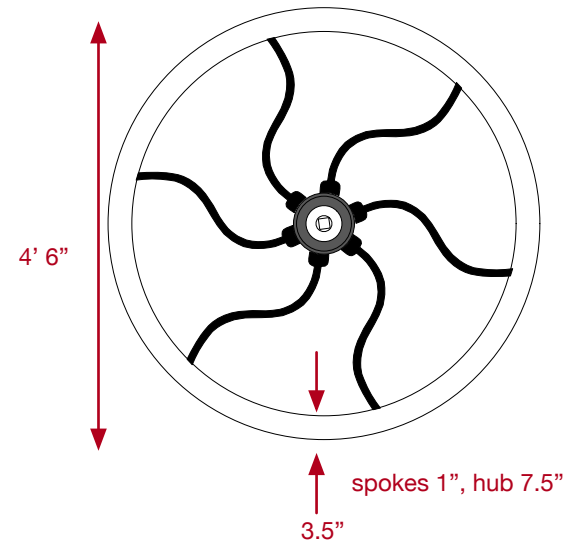
detachable handle



view from aft



view from top



pump flywheel

FLYING CLOUD - BILGE PUMP