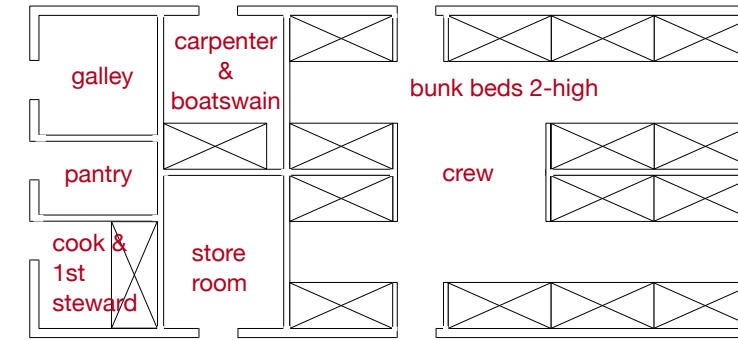


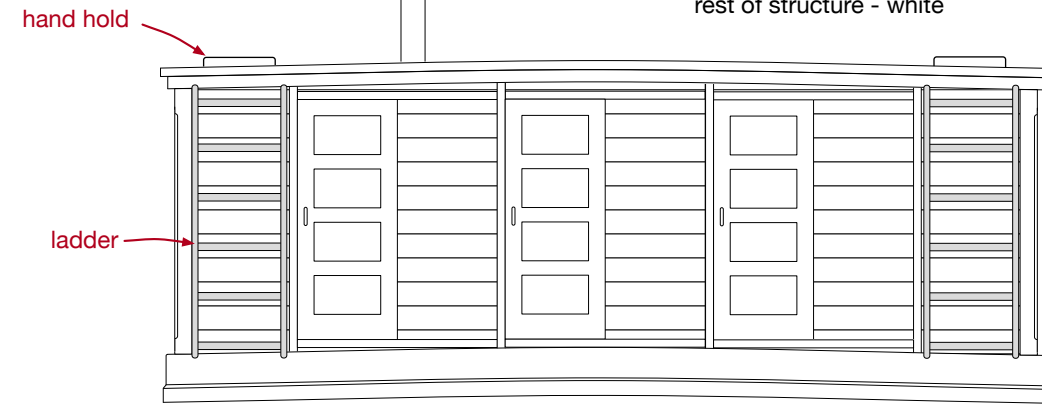
roof planks - sky blue  
 window frames - mahogany  
 doors - oak  
 ladders - oak  
 boat racks - oak  
 galley stack - black  
 rest of structure - white

Coruthers reports that bunks on clipper ships were generally 5' 6" long by 30" wide and stacked 2 high (page 432)

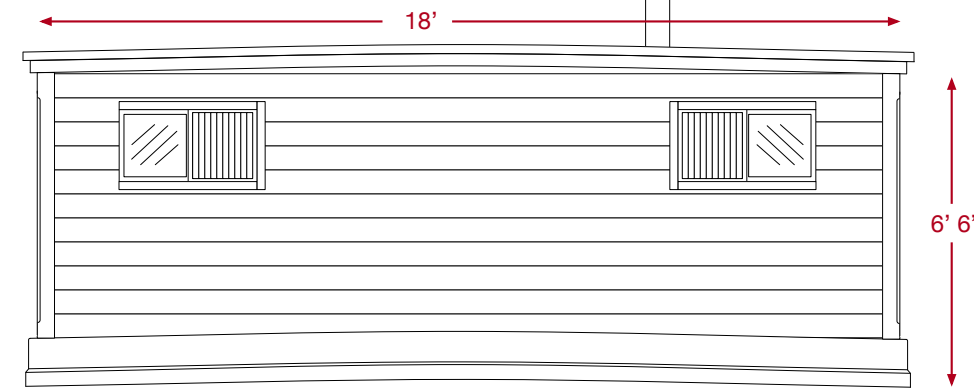


conceptual deck house layout

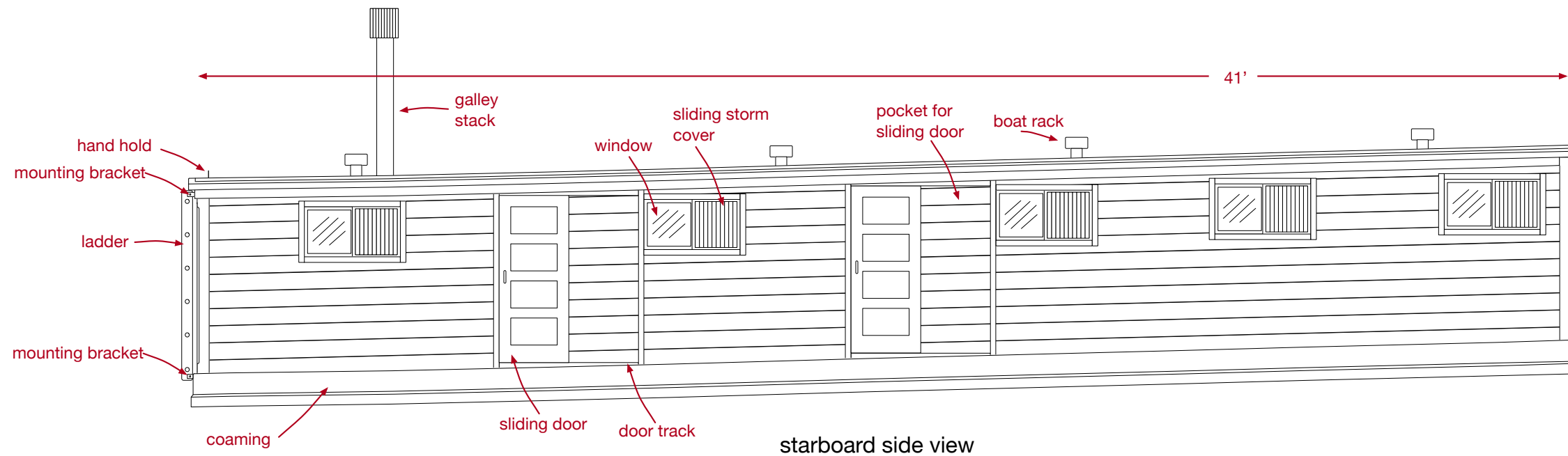
This design for the *Flying Cloud* deck house is mostly based on the Boucher 1916 model of the *Flying Cloud* in the Boston Museum of Fine Arts. The dimensions come from the McLean Boston Daily Atlas article about the launching of the ship.



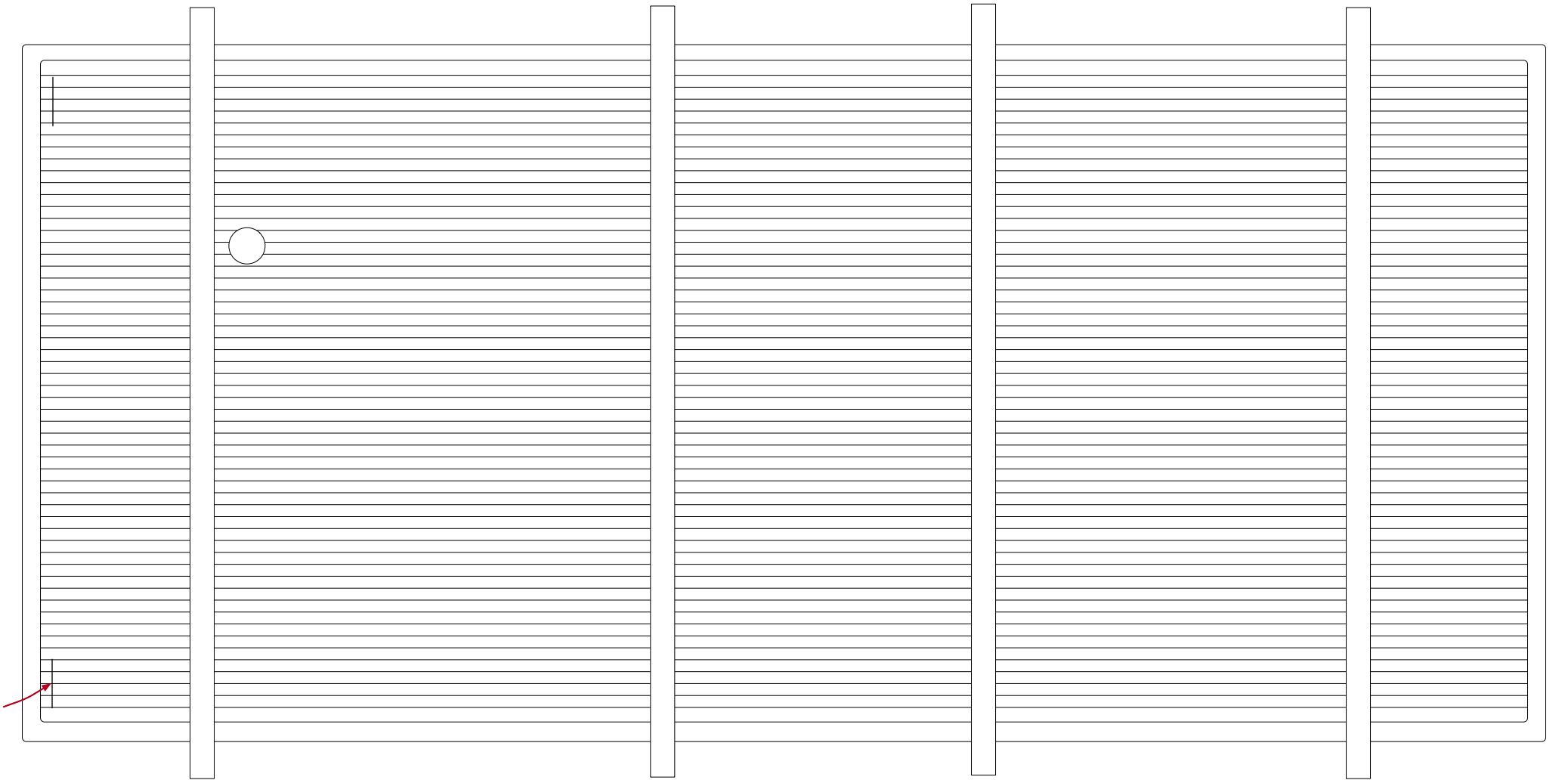
rear view



front view



starboard side view



top view

FLYING CLOUD - DECK HOUSE

5" at 1:48

Scale 1/4" = 1'