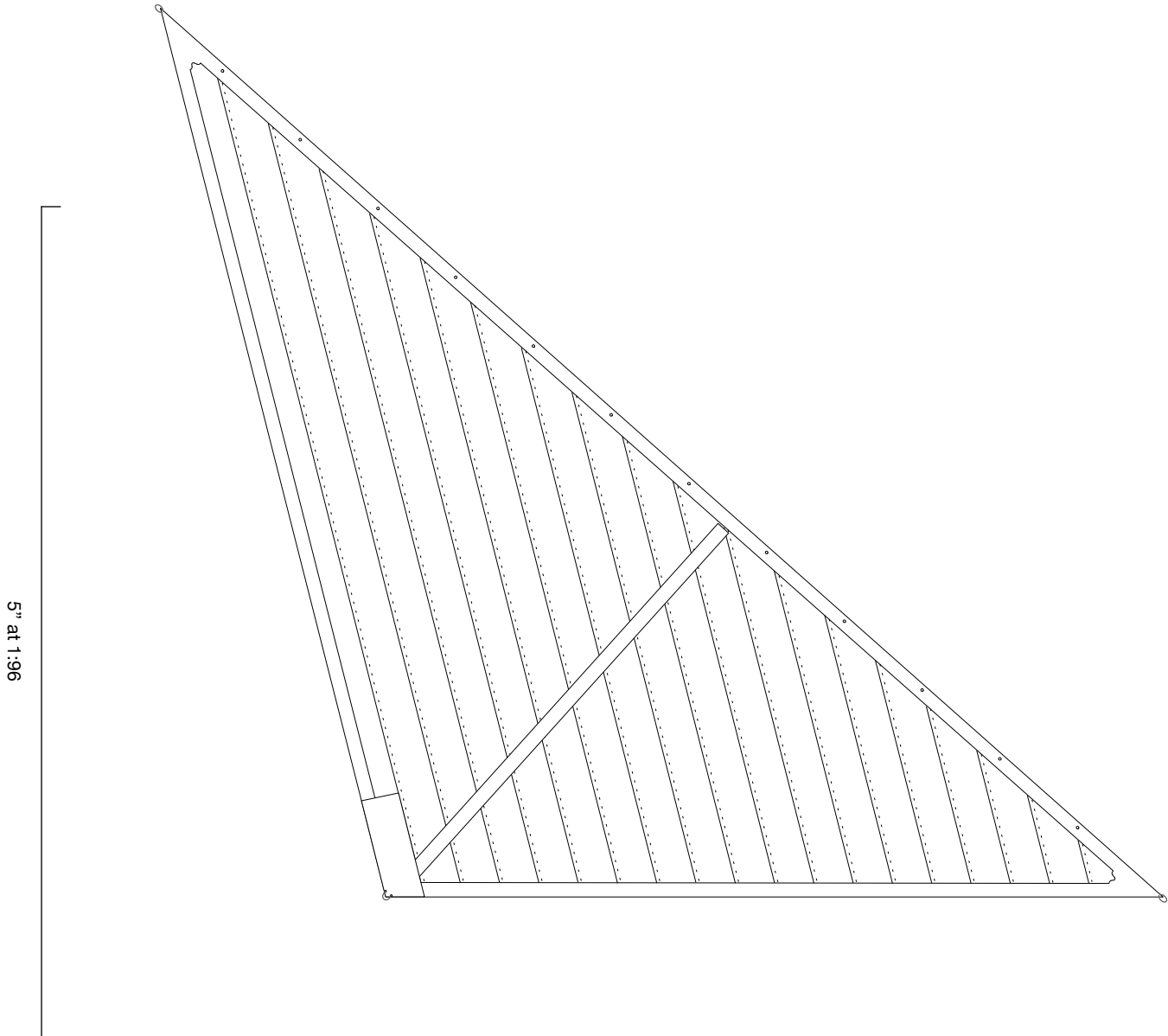


The primary sources for the number, shapes and sizes of the fore and aft sails are the Currier and Ives 1851 lithograph of the *Flying Cloud* and the Boucher 1916 model of the *Flying Cloud* in the Boston Museum of Art. I doubt that either are complete accurate for the *Flying Cloud* but they generally agree with each other and are likely representative of clipper ships of the day. At least one reference, Antonio Jacobsen's 1913 painting, shows a 4th jib but I did not see enough reason to include it.

Other details are from Darcy Lever's 1853 *The Young Sea Officer's Sheet Anchor*, David Steel's 1796 *The Art of Sailmaking* and Harold Underhill's 1946 *Masting & Rigging the Clipper Ship and Ocean Carrier*.



5" at 1:96

Scale 1/8" = 1'

FLYING CLOUD - MAIN TOPGALLANT STAYSAIL